

How to Add To your Trusted Sites

Overview: This documentation will help you add the NLU website to your web browser's trusted sites. You may need to do this to access **Banner7**.

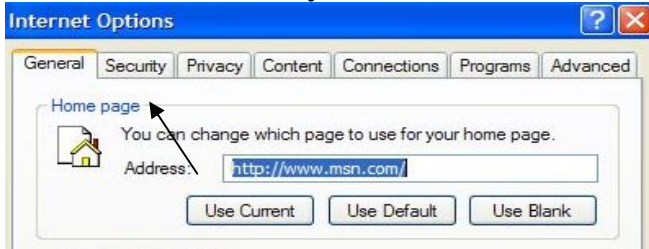
1. Open Internet Explorer and click on Tools:



2. Click on Internet Options:



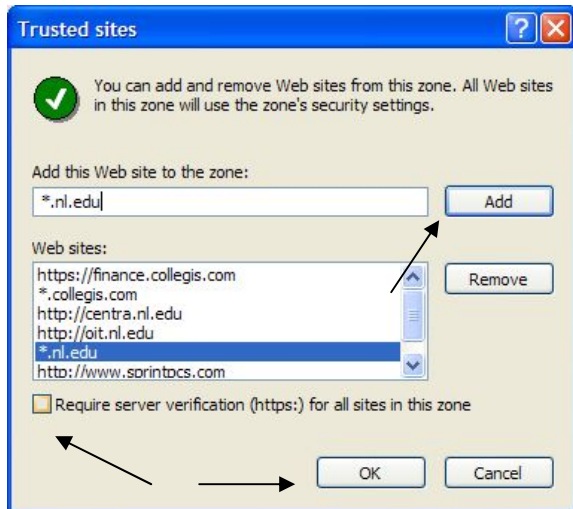
3. Click on the Security tab:



4. Click on Trusted Sites icon and then the Sites button:



5. Click **Add**:



6. Type in ***.nl.edu** and uncheck the box for the Require server verification (https:) for all sites in this zone box. Click **Add** and **Ok**. Click **Ok** again to exit your Internet Options.

You have now added ***.nl.edu** to your trusted sites.